

產品簡介

- ◆本產品機構內附油壓順序閥，預壓式特性操作時可將作動缸充滿油，達到預先設定之壓力，順序閥動作，即可獲得倍數增壓。
- ◆適用於油壓專用機，MC治具低壓回路中，部份油壓缸需高壓操作之場合，僅需一祇電磁閥或安裝於管路中，即可操作HB增壓器，可將低油壓自動轉換成高油壓，獲得高壓夾持。

Introduction of product

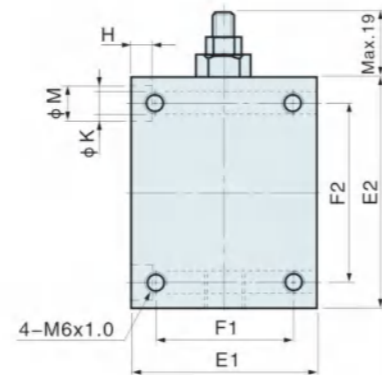
- ◆A hydraulic sequential valve is attached to this booster .when operating ,it oils cylinder and makes it be at the dual pressure and let the sequential valve act ,and then it will have multiple boosting pressure .
- ◆It's fit for hydraulic special purpose machine and MC clamp in low pressure circuit. It needs a solenoid valve installed in the circuit, and then it will be able to operate HB super-charger. The super-charger may be converted automatically from low oil-pressure into high oil-pressure and obtain a high pressure clamping



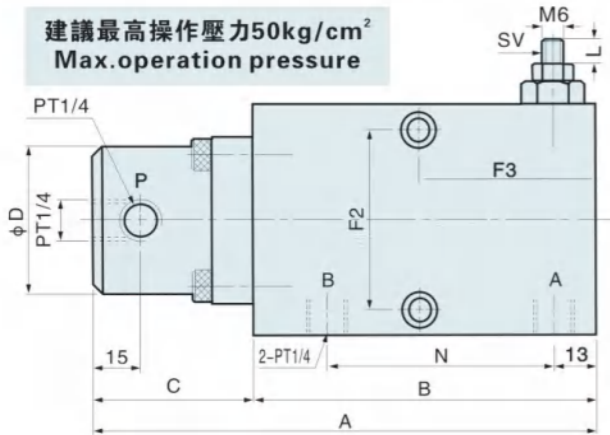
SV油壓順序閥調整參考
Adjustment reference for sv sequence valve

M6 長度L	M6 Length L	mm	7	6	5	4	3	2	1
啟動壓力	Start Pressure	kg/cm ²	20	25	30	35	40	45	50

出廠設定壓力30kg/cm²
Pressure set at 30kg/cm² for shipment



建議最高操作壓力50kg/cm²
Max.operation pressure



外形尺寸表 Dimension table 單位(Unit):mm

MODEL	RB-9×6	RB-8×22	RB-5×35	RB-3.8×45
增壓倍數 Multiple boost	9	8	5	3.8
高壓吐油量 High pressure output	6cc	22cc	35cc	45cc
A	157		210	
B	107		139	
C	50		71	
φD	φ46		φ58	
E1	58		82	
E2	72		95	
F1	43		62	
F2	56		80	
F3	55		70	
H	7		9	
φK	φ7		φ9	
φM	φ11		φ14	
N	71		96	

產品簡介

- ◆此型式油壓順序閥，特別適用於夾具回路，由壓力決定油壓缸之順序動作，體積小，耐高壓，安裝於回路中，不需其他控制，即可得到順序動作確實之效果。
- ◆本產品提供 A: 油路板型 B: 配管型兩種型式，可依夾具整體設計安裝方式需要作適當選擇。

Introduction of product

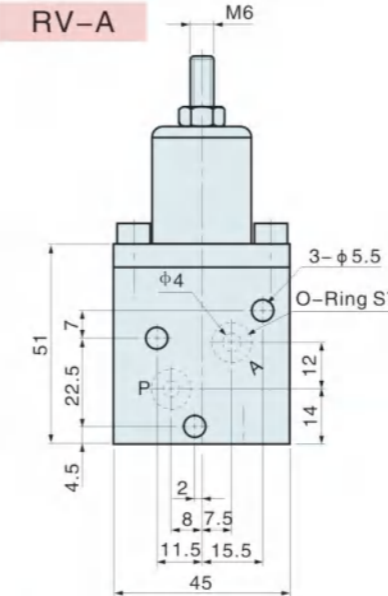
- ◆This series of hydraulic sequence valve is especially ideal for your fitting on the circuit of fixture. The hydraulic cylinder motion sequences are decided by the pressure .The sequence value features compact construction and high pressure resistance .It requires no further control when fitting on the circle, and provides a positive sequential motion control.
- ◆This series provides two types mounting type for choice. A type is a manifold mounting type and B type is a line mounting type. You get a flexible choice of mounting types to suit your fixture design.



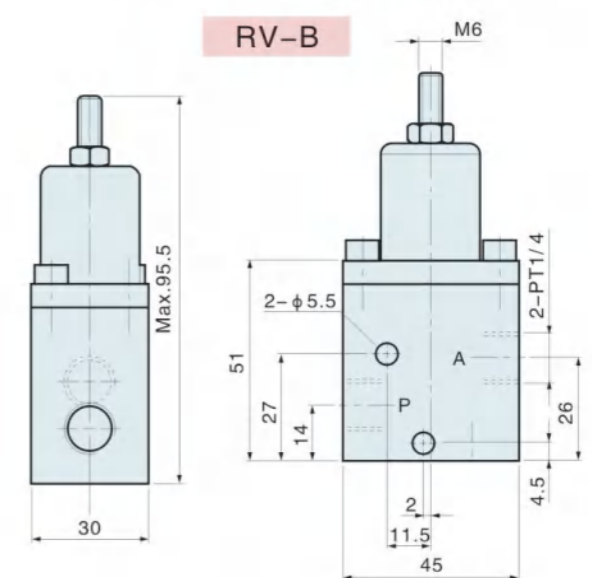
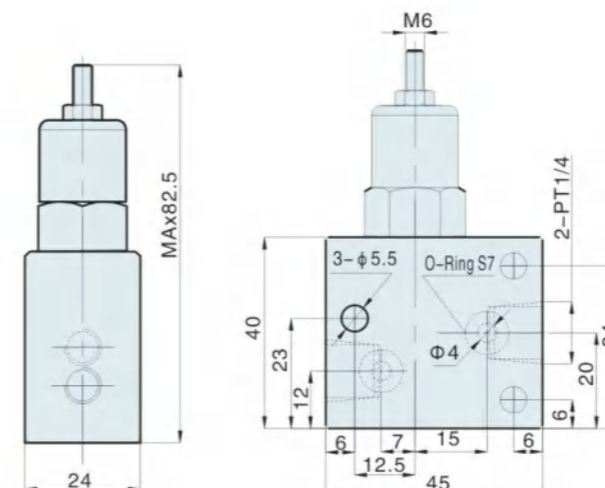
型式與壓力調整範圍
Type and Pressure Range

油路板型	Manifold type	配管式	Line type
RV-A	25-250kg/cm ²	RV-B	25-250kg/cm ²

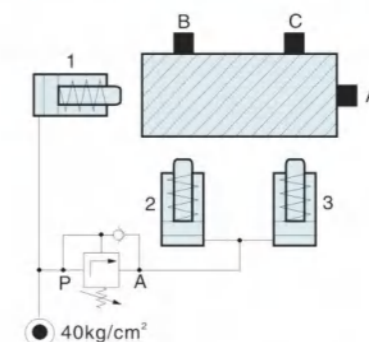
- 注：1、多個順序閥並聯於回路中使用時，相互間設定壓力差不得小於1Mpa(10kgf/cm²)
- 2、工作壓力和設定壓力差值必須要1Mpa以上



RLSV-A 油路板型 使用壓力範圍
RLSV-B 配管式 25-70kg/cm²



迴路圖 Circuit diagram



油壓缸1將工件推向A.壓力達到SV設定40kg/cm²
油壓缸2,3同時將工件推向B,C,獲得順序夾持動作。
The hydraulic cylinder 1 pushes workpiece to A. The pressure reaches to the setting value 40kg/cm² on SV.
The hydraulic cylinders 2 and 3 push workpiece to B and C to provide sequential clamping motion